

RJT Union (BS)

The RJT (Ring Joint Type) Union is comprised of a round slotted nut, male part, a liner, and a gasket.

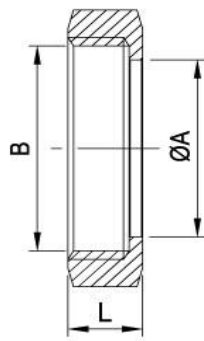
The male part and liner that comes in contact with the product come in SS 304 and SS 316L while the round nut is SS 304.

The gaskets comes in Teflon, BUNA, EPDM, Silicone, and Viton.

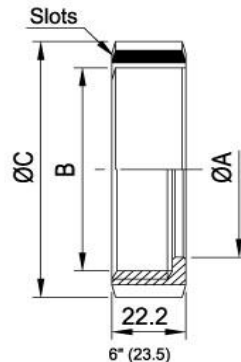
The easiest way to identify an RJT Union is its **O-ring Shape Gasket**.



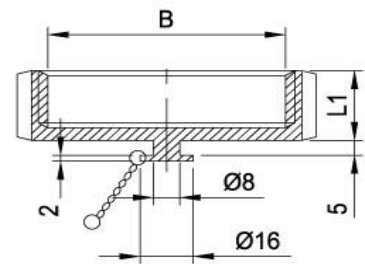
RJT-13H



RJT-13R

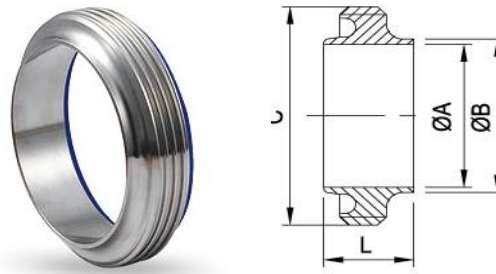


RJT-13HBN



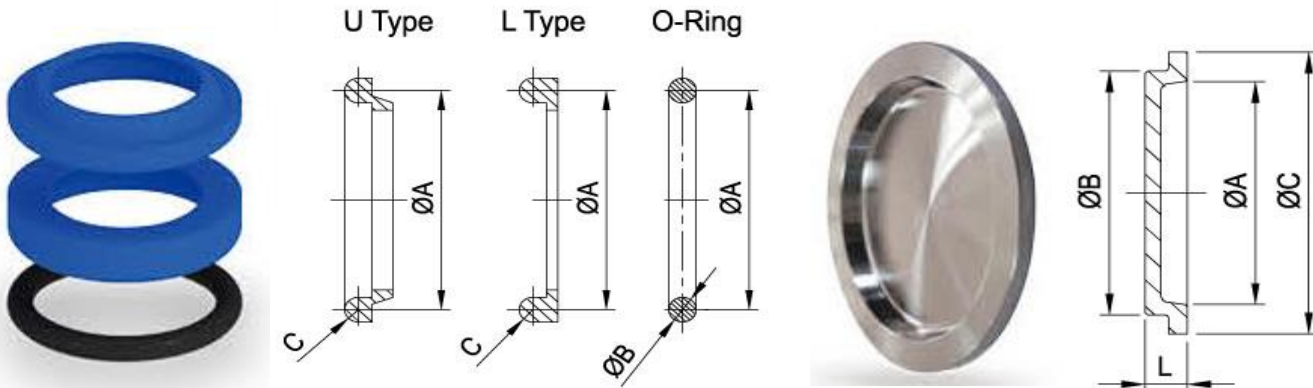
RJT-13 Nut						
Size	ØA	B	ØC	L	L1	Slots
0.5"	14.5	19.6x10 TPI WHIT	-	16	-	-
0.75"	21	26.2x10 TPI WHIT	-	16	-	-
1"	33.45	42.266x8 TPI WHIT	58.5	22.2	23.5	4
1.5"	46	54.966x8 TPI WHIT	74	22.2	23.5	4
2"	58.67	67.92x6 TPI WHIT	85.5	22.2	23.2	6
2.5"	71.4	80.62x6 TPI WHIT	98.5	22.2	23.5	6
3"	84.1	93.32x6 TI WHIT	111.6	22.2	23.5	8
4"	109.7	118.72x6 TPI WHIT	138	22.2	23.5	8
6"	163	169.52x6 TPI WHIT	197	24	-	10

NKE FLOW COMPONENTS SUPPLY SDN BHD



RJT Welding Liner RJT-14				
Size	ØA	ØB	ØC	L
0.5"	9.6	14	18	11.4
0.75"	16	20	23.1	11.4
1"	22.2	25.4	41.3	19.5
1.5"	34.8	38.1	54	19.5
2"	47.5	50.8	66.7	19.5
2.5"	60.2	63.5	79.4	19.5
3"	72.9	76.2	92.1	19.5
4"	97.6	101.6	117.5	19.5
6"	148	152.4	169.1	23.5

RJT Welding Male RJT-15				
Size	ØA	ØB	C	L
0.5"	9.6	13.7	21.2x10T WHIT	16.5
0.75"	16	20	27.6x10T WHIT	16.5
1"	22.1	25.4	45.72x8T WHIT	27
1.5"	34.8	38.1	58.42x8T WHIT	27
2"	47.5	50.8	72.72x6T WHIT	27
2.5"	60.2	63.5	85.42x6T WHIT	27
3"	72.9	76.2	98.12x6T WHIT	27
4"	97.6	101.6	123.52x6T WHIT	27
104	100	104	123.52x6T WHIT	27
6"	148	152.4	174.32x6T WHIT	24



RJT Seal Ring (EPDM, Silicon, Viton)			
Size	ØA	ØB	C
1"	33.3	6.6	3.2
1.5"	46	6.6	3.2
2"	58.7	6.6	3.2
2.5"	71.4	6.6	3.2
3"	84.1	6.6	3.2
4"	109.5	6.6	3.2
6"	162.6	6.6	3.2

RJT-14B Blanks				
Size	ØA	ØB	ØC	L
1"	37.8	32.5	41.3	9
1.5"	40.5	45.2	54	9
2"	53.2	57.9	66.7	9
2.5"	65.9	70.6	79.4	9
3"	78.2	83.3	92.1	9
4"	104	108.7	117.5	9
104	104	108.7	117.5	9