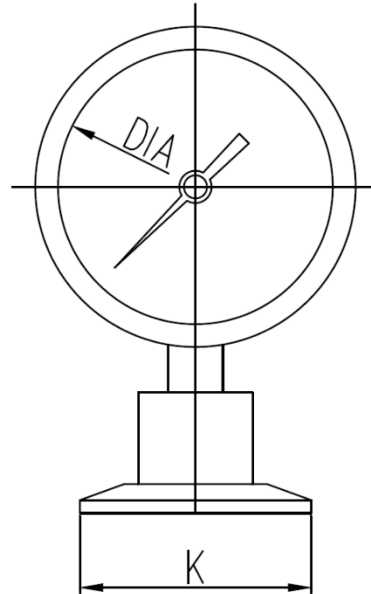


Pressure Gauge



Size	DIA	K
1.5"	60/100	50.5
2"	60/100	64

Method of Operation-

When installed, the Sanitary Pressure Gauge measures pressure in hygienic environments. It comes with a non-porous design to prevent contamination. Available in dry and oil filled types.

Ferrule Connection Size Availability: 1.5" and 2"

Dial Size Availability: 60mm and 100mm

Material Availability: SS 304 and SS 316L

Pressure Range: 0 to 6 Bar, 0 to 10 Bar (other pressure ranges can be requested)